

Bordon, Hampshire, GU35

Quickmove
PROPERTIES



Price as listed

 x 2

 x 2

This pre-owned, large Omar Ikon park bungalow (50'x20') is perfect for those looking for a detached, easy to maintain, bungalow-style retirement property. The home has a modern, spacious kitchen with integrated appliances, an island and a dining area, leading through to a comfortable living room with an electric fireplace. The home has a master bedroom with an en suite and a second double bedroom and bathroom. The exterior enjoys a large decking and garden area. The home is the only home on park with mains gas and has parking for 2 cars.

The park is surrounded by stunning countryside in a beautiful corner of East Hampshire. While the setting is secluded and peaceful, you're also close to the hustle and bustle of larger towns such as Alton, Fareham, Haslemere, Guildford and the charming market town of Petersfield. The development is also just minutes away by car from Whitehill Forest shopping centre, the doctor's surgery and library are located.

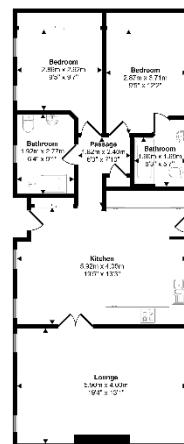
Age restriction: Over 45s
 Pet friendly: Yes
 Site fees: £295.76 per month
 Residential license

House to sell?

Hassle-free Property Part-Exchange is available from Quickmove Properties, with no estate agent fees, no solicitor's fees and no market uncertainty.

Key Features

- Decking
- Garden space
- Over 45s
- Part Exchange Available
- Pet-Friendly
- Pre-owned park home
- Private, Gated Development
- Residential Development
- Two Double Bedrooms



CONTACT US

01793 840917

advice@quickmoveproperties.co.uk

Quickmove
 PROPERTIES

