

Ipswich, Suffolk, IP7

Quickmove
PROPERTIES



Price as listed

 x 2

 x 2

This brand new, modern-furnished Omar Middleton (40'x20') park home is perfect for those looking for a detached, easy to maintain, bungalow-style retirement property. The home has a spacious kitchen, living and dining room, two bedrooms, and a bathroom

Located in the heart of Suffolk's beautiful Constable Country, this residential park is situated on the edge of the attractive village of Great Bricett, next to open countryside and within easy access of local amenities. The park is located perfectly for those wanting to get back to nature with ample opportunities for nature walks, cycling, fishing, bird watching and golfing.

Age restriction: Over 45s

Pet friendly: Yes

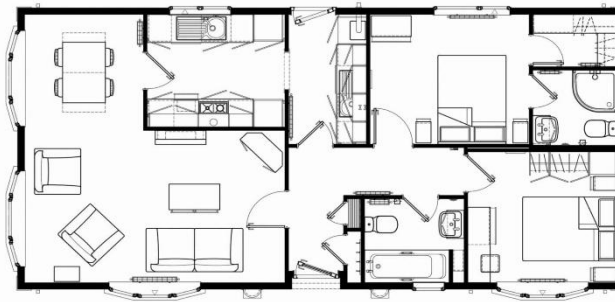
Site fees: £231.02 per month

Residential license

Stock images have been used, the home on site may vary.

Key Features

- Double glazing
- Fully Furnished
- Gas Central Heating
- Luxury 2 Bed Park Bungalow
- Over 55's
- Part Exchange Available
- Pet-Friendly
- Residential Park
- Rural Location



House to sell?

Hassle-free Property Part-Exchange is available from Quickmove Properties, with no estate agent fees, no solicitor's fees and no market uncertainty.

CONTACT US

01793 840917

advice@quickmoveproperties.co.uk

Quickmove
PROPERTIES

