

# Garsington, Oxfordshire, OX44

**Quickmove**  
PROPERTIES



Price as listed



This brand-new, modern-furnished Prestige Sonata (40'x20') luxury park home is perfect for those looking for a detached, easy-to-maintain, bungalow-style property. The home has a modern spacious kitchen, dining area, comfortable living room, two double bedrooms, and en suite and a bathroom.

This residential park home estate consists of 110 homes with the majority of residents being of semi-retirement age. This development is in a rural setting on the outskirts of Garsington near the University City of Oxford. The park provides a peaceful environment for the residents with excellent transport links to Oxford and the surrounding areas. There are also a host of retail outlets within a short walk of the park.

Age restriction: Over 55s

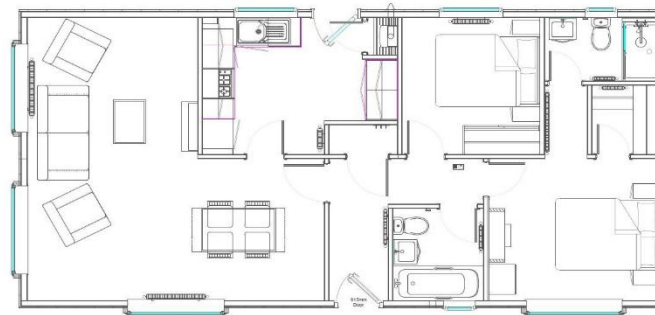
Pet friendly: No

Site fees (at time of listing): £228.55 per month

Residential license

### Key Features

- Brand new home
- Community Living
- Established Park
- Exceptionally High Specification
- Fully Furnished
- Garden space
- Modern design
- Over 55's
- Part Exchange Available
- Residential Development



### House to sell?

Hassle-free Property Part-Exchange is available from Quickmove Properties, with no estate agent fees, no solicitor's fees and no market uncertainty.

### CONTACT US

01793 840917

[advice@quickmoveproperties.co.uk](mailto:advice@quickmoveproperties.co.uk)

**Quickmove**  
PROPERTIES

