

Redruth, Cornwall, TR16



Price as listed



This pre-owned, Stately Badminton (40'x20') park home is perfect for those looking for a detached, easy-to-maintain, bungalow-style property. The home has a modern, spacious kitchen, dining area and comfortable living room. There are two double bedrooms, en suite and bathroom. The home has an enclosed, low-maintenance garden.

This home is set in an exclusive development of eight homes located in the village of North Country. The development is exclusive for those over 50 and is pet friendly. There is a bus stop nearby which provides transport to the wider area.

North Country, near Redruth, is a quiet rural location with easy access to the A30 and nearby Truro. Redruth, with its mainline railway is only 2 miles away. The coastal villages of Porthtowan and Portreath with their beaches and coastal walks are a 5 minute drive.

Site fees (at time of listing): £161.75 per month

Tenure: Virtual Freehold

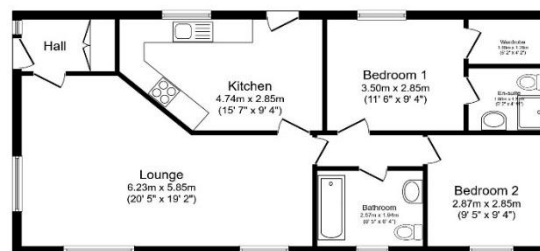
Council Tax Band: A

House to sell?

Hassle-free Property Part-Exchange is available from Quickmove Properties, with no estate agent fees, no solicitor's fees and no market uncertainty.

Key Features

- Close to Beaches and Amenities
- Community Living
- Driveway
- Fitted Kitchen with Integrated Appliances
- Over 50s
- Part Exchange Available
- Pre-owned park home
- Quiet Exclusive Pet Friendly Park
- Residential Development
- Two Bedrooms



Total floor area 73.6 sq.m. (792 sq.ft.) approx.
This floor plan is for illustrative purposes only. It is not drawn to scale. Any measurements, floor areas (including any total floor areas), openings and orientation are approximate. No details are guaranteed. They cannot be relied upon for any purpose and they do not form part of any agreement. No liability is taken for any error, omission or misstatement. A party must rely upon its own inspection(s). Powered by www.foxgloves.com



CONTACT US

01793 840917

advice@quickmoveproperties.co.uk

Quickmove
PROPERTIES



The Property
Ombudsman