

Bordon, Hampshire, GU35

Quickmove
PROPERTIES



Price as listed

 x 2  x 2

This pre-owned Omar Westbury 2020 park home (40'x20') is perfect for those looking for a detached, easy to maintain, bungalow-style property. The home has a modern kitchen with integrated appliances, and a living and dining room. There are two double bedrooms, an en suite and a family bathroom. The home has a larger than average, low maintenance garden.

The park is surrounded by stunning countryside in a beautiful corner of East Hampshire. While the setting is secluded and peaceful, you're also close to the hustle and bustle of larger towns such as Camberley, Basingstoke, Guildford and the charming market towns of Alton and Petersfield. The development is also just minutes away by car from Tesco and Lidl, Whitehill Forest shopping centre, the doctor's surgery and a library.

Age restriction: Over 45s

Pet friendly: Yes

Site fees: £283.25 per month (includes sewerage)

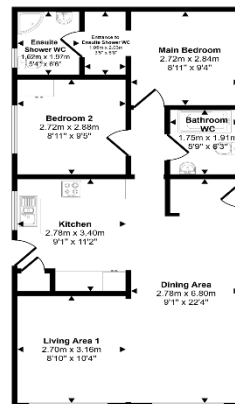
Residential license

House to sell?

Hassle-free Property Part-Exchange is available from Quickmove Properties, with no estate agent fees, no solicitor's fees and no market uncertainty.

Key Features

- Community Living
- Large garden
- Over 45s
- Part Exchange Available
- Pet-Friendly
- Pre-owned park home
- Private, Gated Development
- Residential Development
- Two Double Bedrooms



CONTACT US

01793 840917

advice@quickmoveproperties.co.uk

Quickmove
PROPERTIES



The Property
Ombudsman