

# Etchingam, East Sussex, TN19

**Quickmove**  
PROPERTIES



Price as Listed

 x 2

 x 2



This pre-owned Tingdene Dolben park home is perfect for those looking for a detached, easy to maintain, bungalow-style property. This home is a well appointed two double bedroom (48'x20') park home bungalow situated on this sought after residential park for the over 45's. The home boasts a generous garden area and a garage with driveway.

Boasting an attractive rural woodland setting, this residential development is ideally located for those looking for a comforting retreat well away from the hustle and bustle of busy city life. Burwash Village has many interesting buildings along its tree-lined streets, with parts dating from before the 16th century, the village also has local amenities including pubs and a convenience store. The main shopping centre for Burwash is in the small town of Heathfield, which is about six miles away. The nearest large town shopping centers are in Hastings, which is about 12 miles away, and Tunbridge Wells, which is 15 miles away.

Age restriction: Over 45s

Pet friendly: Dog friendly

Site fees: £217 per month

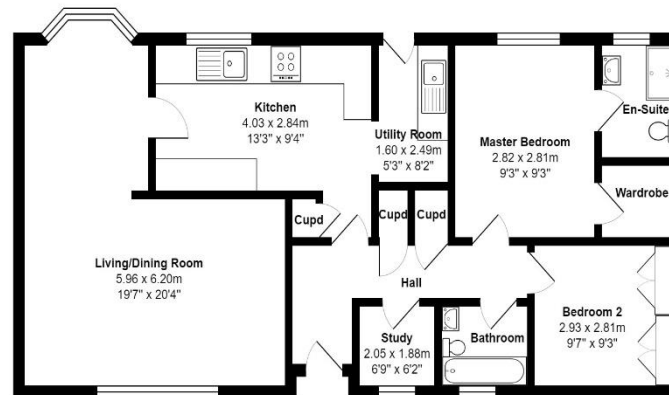
Residential license

### House to sell?

Hassle-free Property Part-Exchange is available from Quickmove Properties, with no estate agent fees, no solicitor's fees and no market uncertainty.

### Key Features

- Dog friendly
- Established Park
- Garage and Driveway
- Garden space
- Over 45s
- Part Exchange Available
- Pre-owned park home
- Residential Development



### CONTACT US

01793 840917

[advice@quickmoveproperties.co.uk](mailto:advice@quickmoveproperties.co.uk)

**Quickmove**  
PROPERTIES



**The Property  
Ombudsman**