

# Northallerton, Yorkshire, DL6



Price as listed





This brand new, modern-furnished Beverley Norwood (39'x12') luxury lodge is perfect for those looking for a detached, easy to maintain, bungalow-style property. The lodge features an open plan kitchen, living and dining area, two bedrooms and two bathrooms.

This 12-month leisure park is located at the foot of the Cleveland Hills and on the edge of the North York Moors National Park. The park is a peaceful haven nestled amongst the rolling hills, woodland, and the gentle sounds of the beck, rich in wildlife. It is exclusive for the over 50s and is pet friendly.

The park is 10 miles from the market town of Northallerton, where you can find town facilities including a medical practise, church, pubs, banks, hairdresser, and opticians. With the picturesque towns of Yarm, Stokesley and Swainby just a short drive away, there are plenty of options for days out and all the amenities you need are within easy reach. If you enjoy spending time by the coast, Saltburn-by-the Sea is 16 miles away.

Age restriction: Over 50s

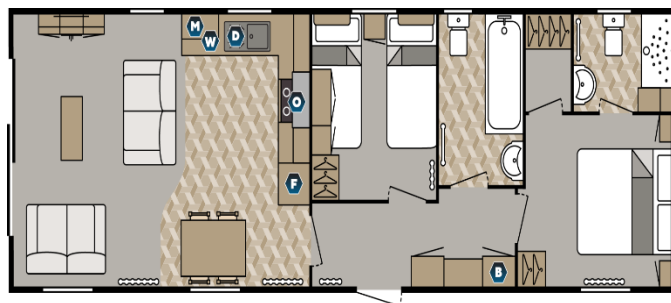
Pet friendly: Yes

Site fees (at time of listing): £230 per month

12-month leisure license

## Key Features

- 12 Month Leisure Licence
- Brand new home
- Community Living
- Decking
- Fully Furnished
- Over 50s
- Parking space
- Sheds allowed
- Two Bedrooms
- Modern home



## CONTACT US

01793 840917

[advice@quickmoveproperties.co.uk](mailto:advice@quickmoveproperties.co.uk)

**Quickmove**  
PROPERTIES

