

# Redruth, Cornwall, TR16



Price as listed



This brand-new, modern-furnished Stately Badminton (38'x20') luxury park home is perfect for those looking for a detached, easy-to-maintain, bungalow-style property. The home has a modern and spacious kitchen with integrated appliances, a comfortable living room, two double bedrooms, an en suite and a bathroom.

North Country, near Redruth, is a quiet rural location with easy access to the A30 and nearby Truro. Redruth, with its mainline railway is only 2 miles away. The coastal villages of Porthtowan and Portreath with their beaches and coastal walks are a 5 minute drive.

Age restriction: Over 50s

Pet friendly: Yes

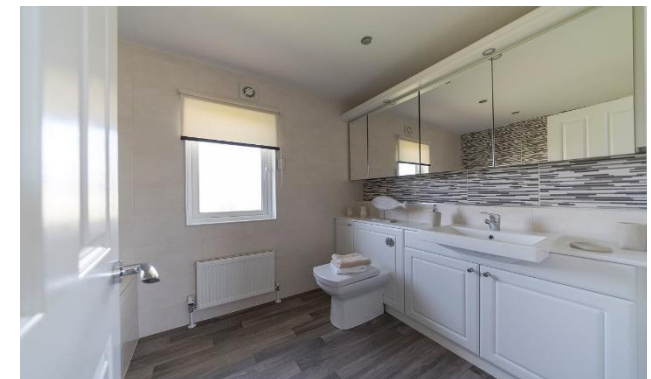
Site fees (at time of listing): £161.53 per month

Residential license

Stock images have been used.

### Key Features

- Brand new home
- Coastal Location
- Exceptionally High Specification
- Modern design
- Over 50s
- Part Exchange Available
- Pet-Friendly
- Residential Development
- Small exclusive development
- Two Bedrooms



### House to sell?

Hassle-free Property Part-Exchange is available from Quickmove Properties, with no estate agent fees, no solicitor's fees and no market uncertainty.

### CONTACT US

01793 840917

[advice@quickmoveproperties.co.uk](mailto:advice@quickmoveproperties.co.uk)

**Quickmove**  
PROPERTIES

