

Hereford, Herefordshire, HR4

Quickmove
PROPERTIES



Price as listed



This brand-new, modern-furnished Willerby Hazelwood (42'x20') luxury park home is perfect for those looking for a detached, easy-to-maintain, bungalow-style property. The home has a spacious, galley-style kitchen with integrated appliances, dining area and comfortable living room. The master bedroom has an en suite, there is a second double bedroom and bathroom.

The development is located on the outskirts of Hereford, making the most of amenities nearby and the wonderful surrounding countryside. Nearby is the Brecon Beacons National Park, and the Wye Valley National Landscape, both are full of walking and hiking routes and stunning landscapes. The centre of Hereford is 2.5 miles from the park, where you can find all your essential amenities, high street shops, train station and hospital.

Age restriction: Over 55s

Pet friendly: Yes

Site fees (at time of listing): £210 per month

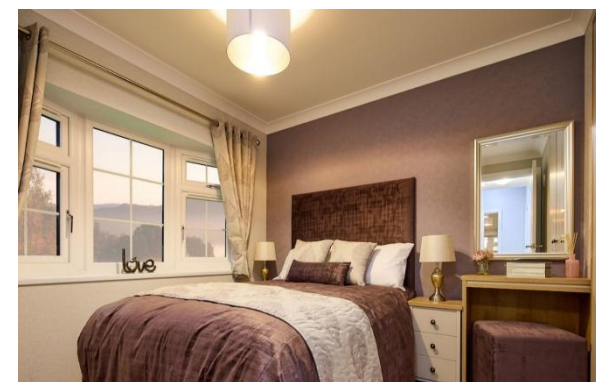
Residential license

House to sell?

Hassle-free Property Part-Exchange is available from Quickmove Properties, with no estate agent fees, no solicitor's fees and no market uncertainty.

Key Features

- Brand new home
- Bus stop at park entrance
- Close To Nearby Amenities
- Exceptionally High Specification
- Fully Furnished
- Over 55's
- Part Exchange Available
- Pet-Friendly
- Residential Development
- Two Bedrooms



CONTACT US

01793 840917

advice@quickmoveproperties.co.uk

Quickmove
PROPERTIES

