

Silloth, Cumbria, CA7



Price as listed



This pre-owned modern Omar (40'x20') park home is perfect for those looking for a detached, easy to maintain, bungalow-style property. The landscaped exterior boasts a garden area, double garage and driveway. The home has a modern, open plan kitchen, dining area and a comfortable lounge with French door leading to the decking. There are two double bedrooms, an en suite and a family bathroom.

The park is set in tranquil grounds only 100m from the sea in the coastal town of Silloth-on-Solway, just a short drive from the Lake District, with its picturesque lakes, idyllic villages, and high moorlands. In Silloth you can find all local amenities and 25 miles away is the larger city of Carlisle.

Age restriction: Over 50s

Pet friendly: Yes

Site fees (at time of listing): £1,222 per year

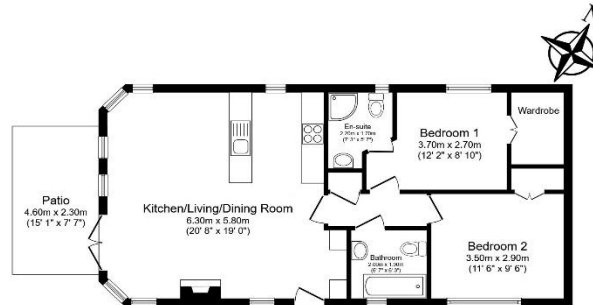
Residential license

House to sell?

Hassle-free Property Part-Exchange is available from Quickmove Properties, with no estate agent fees, no solicitor's fees and no market uncertainty.

Key Features

- Garage
- Garden space
- Leisure facilities onsite
- Modern design
- Off-road Parking
- Over 50s
- Pet-Friendly
- Pre-owned park home
- Private development
- Residential Park Home



Total floor area 68.1 sq.m. (733 sq.ft.) approx

This floor plan is for illustrative purposes only. It is not drawn to scale. Any measurements, floor areas (including any total floor area), openings and orientation are approximate. No details are guaranteed, they cannot be relied upon for any purpose and they do not form part of any agreement. No liability is taken for any error, omission or misstatement. A party must rely upon its own inspection(s). Powered by www.bosagroup.com



CONTACT US

01793 840917

advice@quickmoveproperties.co.uk

Quickmove
PROPERTIES



**The Property
Ombudsman**