

Portbury, Bristol, BS20



Price as listed



This pre-owned two-bed (40'x20') park home is perfect for those looking for a detached, easy-to-maintain, bungalow-style property. The home has a spacious kitchen with an integrated cooker, dining area and a separate living room with an electric fireplace. The home has two double bedrooms, an en suite and a bathroom. The exterior has a parking space and a low maintenance garden space.

The park consists of 48 homes set in beautiful surroundings with established gardens, roads, paths, and a local bridleway. The development is in the hamlet of Sheepway in North Somerset but has easy access to the local towns by the local bus services. The M5 and A369 are close to the park to explore the surrounding area and provide easy access to cross over into South Wales. The coastal resort of Weston-Super-Mare is only a 30-minute drive away.

Age restriction: Over 55s

Pet friendly: No

Site fees (at time of listing): £240 per month

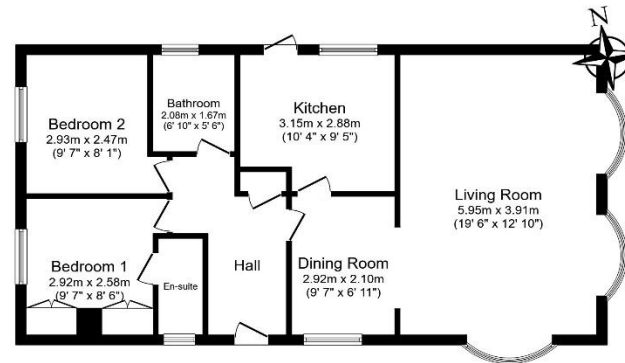
Residential license

House to sell?

Hassle-free Property Part-Exchange is available from Quickmove Properties, with no estate agent fees, no solicitor's fees and no market uncertainty.

Key Features

- Community Living
- Driveway
- Garden space
- Over 55's
- Part Exchange Available
- Pre-owned park home
- Residential Development
- Shops and amenities nearby
- Two Bedrooms



Total floor area 71.6 sq.m. (771 sq.ft.) approx

This floor plan is for illustrative purposes only. It is not drawn to scale. Any measurements, floor areas (including any total floor area), openings and orientation are approximate. No details are guaranteed. They cannot be relied upon for any purpose and they do not form part of any agreement. No liability is taken for any error, omission or misstatement. A party must rely upon its own inspection(s). Powered by www.floorplan.com



CONTACT US

01793 840917

advice@quickmoveproperties.co.uk

Quickmove
PROPERTIES

