

# Newmachar, Aberdeenshire, AB21

**Quickmove**  
PROPERTIES



Price as listed



This pre-owned Stately Albion Goodwood park home (46'x20') is perfect for those looking for a detached, easy to maintain, bungalow-style property. The home has a modern kitchen with integrated appliances and utility room, dining area, and comfortable living room. There is a study, two double bedrooms, an en suite and a bathroom. The home has a driveway, shed and garden space. The home is on the edge of the park, the rear view overlooks the park but the front has gorgeous countryside views, fields and a stream.

The development is located 2 miles from the village of Newmachar, where you can find amenities, including a convenience store, hotel & restaurant, two pubs, fish & chip shop, post office, community sports centre and hairdresser. A bus stop at the entrance to the park provides regular transport into Aberdeen.

Age restriction: Over 50s

Pet friendly: Yes

Site fees (at time of listing): £178 per month

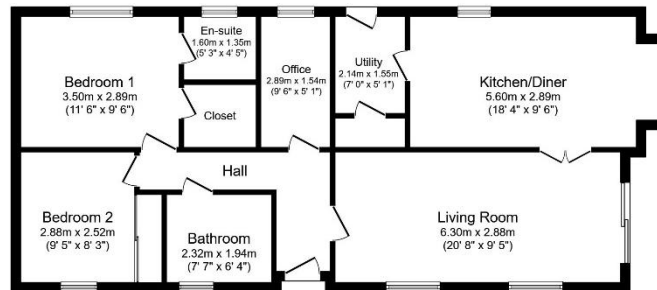
Residential license

### House to sell?

Hassle-free Property Part-Exchange is available from Quickmove Properties, with no estate agent fees, no solicitor's fees and no market uncertainty.

### Key Features

- Countryside Views
- Over 50s
- Part Exchange Available
- Pet-Friendly
- Private, Gated Development
- Residential Development
- Two Double Bedrooms
- Well maintained home
- Wrap around garden



### CONTACT US

01793 840917

[advice@quickmoveproperties.co.uk](mailto:advice@quickmoveproperties.co.uk)

**Quickmove**  
PROPERTIES

