

# Chertsey, Surrey, KT16



Price as listed



This brand new, modern-furnished Manor Olney (45'x20') luxury park home is perfect for those looking for a detached, easy to maintain, bungalow-style property. The home features two double bedrooms, an en-suite and a family bathroom. There is a fully fitted, modern kitchen and a spacious living and dining area.

This is one of the largest residential parks for the over 50's, with a strong community spirit and a thriving social club. A regular bus service goes from the park to Chertsey and Staines, both provide excellent shopping facilities. A health centre can be found at Chertsey, which can be reached by a walk across the local golf course if you wish. The M25 is only a short drive away and for commuters to London there is a main line station at Staines, reaching Waterloo in 30 minutes. There are many local places of interest to visit including Windsor Castle, Runnymede and Thorpe Park.

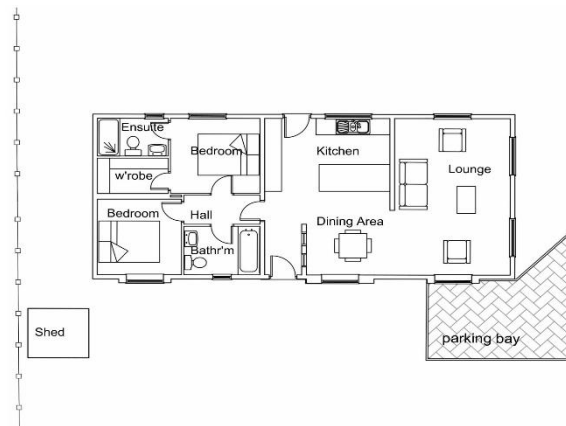
Age restriction: Over 50's  
 Pet friendly: Yes  
 Site fees: £289 per month

### House to sell?

Hassle-free Property Part-Exchange is available from Quickmove Properties, with no estate agent fees, no solicitor's fees and no market uncertainty.

### Key Features

- Brand new home
- Communal Bar Area
- Community Living
- Fully Fitted Kitchen
- Fully Furnished
- Luxury 2 Bed Park Bungalow
- Over 50s
- Pet-Friendly
- Retirement Property
- Up to 100% part exchange available



### CONTACT US

01793 840917

[advice@quickmoveproperties.co.uk](mailto:advice@quickmoveproperties.co.uk)

**Quickmove**  
 PROPERTIES

