

Northenden, Manchester, M22



Price as listed



This brand-new, modern-furnished Omar Newmarket (36'x20') luxury park home is perfect for those looking for a detached, easy-to-maintain, bungalow-style property. The home is built to a high specification, with a modern and spacious kitchen and a separate living room with an electric fireplace. There are two double bedrooms, an en suite to the master and a second family bathroom.

This residential development is located on the outskirts of Manchester and backs onto Didsbury which is one of the most affluent areas to live in Greater Manchester, with plenty of town amenities nearby.

The development is located just 6 miles from the city centre, in Northenden. Northenden has all local amenities, including shops, pubs, takeaways, restaurants and a medical centre. Next door to the development is the popular Didsbury Golf Club. There is a bus route outside the park which can take passengers to Manchester city centre. The park is situated on the Northenden Circular Trail which is part of Wythenshaw Park, which offers hiking and biking trails, bird watching and the River Mersey running through.

Age restriction: Over 45's

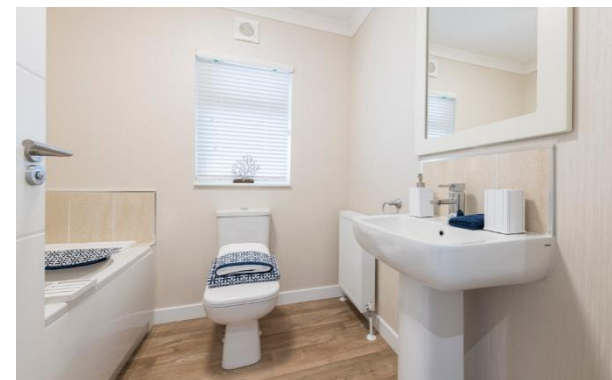
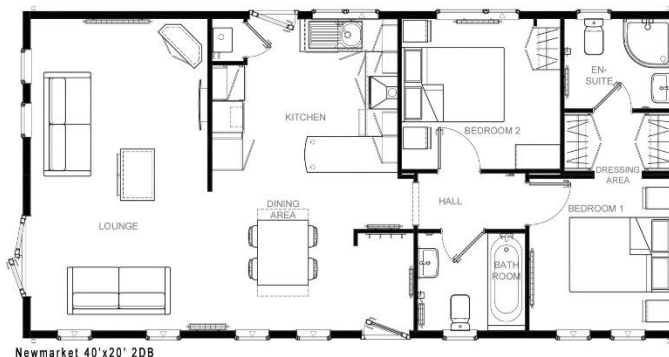
Pet friendly: Yes (1 small/medium dog or 1 cat)

Site fees: £220 per month

Stock images have been used, the home on site may vary

Key Features

- Brand new home
- Community Living
- Exceptionally High Specification
- Fully Furnished
- Over 45s
- Parking space
- Part Exchange Available
- Pet-Friendly
- Residential Development
- Town location



House to sell?

Hassle-free Property Part-Exchange is available from Quickmove Properties, with no estate agent fees, no solicitor's fees and no market uncertainty.

CONTACT US

01793 840917

advice@quickmoveproperties.co.uk

Quickmove
PROPERTIES



The Property
Ombudsman