

# Hinckley, Leicestershire, LE10

**Quickmove**  
PROPERTIES



Price as listed

 x 2  x 2

This brand-new, modern-furnished Omar Regency (50'x20') luxury park home is perfect for those looking for a detached, easy-to-maintain, bungalow-style property. The home has a spacious and modern kitchen with integrated appliances, a comfortable living room and dining area, two double bedrooms, an en suite and a bathroom. The home has a garage and two car parking spaces.

The development backs onto Wykin Community Park at the very edge of Hinckley, south east of Leicester. Residents are located just a few minutes walk from a supermarket and a pub, and the development is located on bus routes that travel throughout Leicestershire. Hinckley has all the town amenities you will need, including high street shops, train station, medical centre and restaurants.

Age restriction: Over 55s

Pet friendly: Yes

Site fees (at time of listing): £206 per month

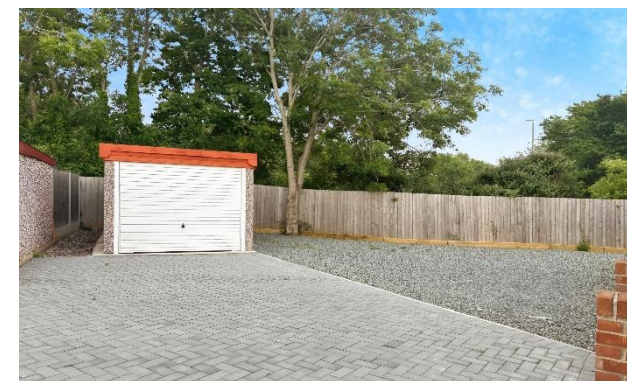
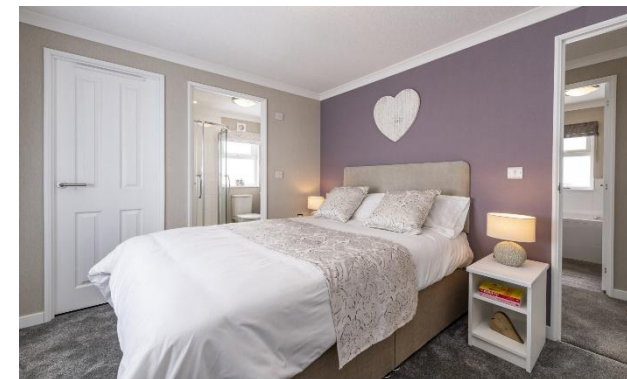
Residential license

### House to sell?

Hassle-free Property Part-Exchange is available from Quickmove Properties, with no estate agent fees, no solicitor's fees and no market uncertainty.

### Key Features

- Brand new home
- Community Living
- Exceptionally High Specification
- Garage
- Modern design
- Over 55's
- Part Exchange Available
- Pet-Friendly
- Residential Development
- Two Parking Spaces



## CONTACT US

01793 840917

[advice@quickmoveproperties.co.uk](mailto:advice@quickmoveproperties.co.uk)

**Quickmove**  
PROPERTIES



The Property  
Ombudsman