

North Yorkshire, York, YO42



Price as listed



This brand-new, modern-furnished Willerby Haywood (40'x20') luxury lodge is perfect for those looking for a detached, easy-to-maintain, bungalow-style leisure property. The lodge has a spacious, open plan layout with a modern kitchen with integrated appliances, comfortable living room and dining area. There is a double bedroom with an en suite, a twin bedroom and a bathroom.

This 12-month leisure development is set in 3 acres of stunning Yorkshire countryside. Consisting of 20 plots, the development is beautifully landscaped, and each lodge has two parking spaces.

The development is well located for making the most of the wonderful Yorkshire countryside and nearby town amenities. The historic market town of Pocklington is just down the road for the development. The town has boutique shops, a medical centre, Sainsburys, cafes, restaurants and pubs. York is 13 miles from the park where you can find city amenities. The development is close to the M18 giving easy North/South access to the motorway network. There is a bus route located just outside the park which goes to York, Beverley and Hull.

Age restriction: None

Pet Friendly: Yes

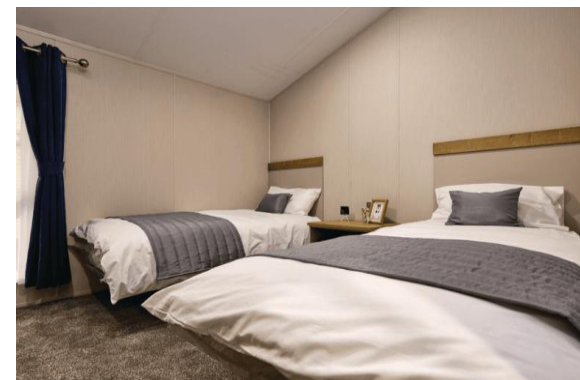
Site fees (at time of listing): £3,300 per year

Leisure license

Stock images have been used.

Key Features

- 12 Month Leisure Licence
- Brand new lodges
- Bus Stop Nearby
- Countryside location
- Exceptionally High Specification
- Fully Furnished
- House buying service
- No age restriction
- Pet-Friendly
- Two Bedrooms



CONTACT US

01793 840917

advice@quickmoveproperties.co.uk

Quickmove
PROPERTIES

