

Worcester, Worcestershire, WR2



Price as listed



This pre-owned Stately Chatsworth Gold (36'x20') park home is perfect for those looking for a detached, easy-to-maintain, bungalow-style property. The home has a kitchen, dining area and living room, two double bedrooms and a bathroom.

This established, gated residential development is located in a village setting providing its residents with a peaceful atmosphere, while being close to city amenities. The development is located near a few small villages including Callows End and Powick, which is a short drive from the city of Worcester. Worcester is a lovely small city on the River Severn, with a bustling town centre. The Malvern Hills are a short drive from the park with stunning scenery and walking routes.

Age restriction: Over 52

Pet Friendly

Site fees (at time of listing): £190 every 4 weeks

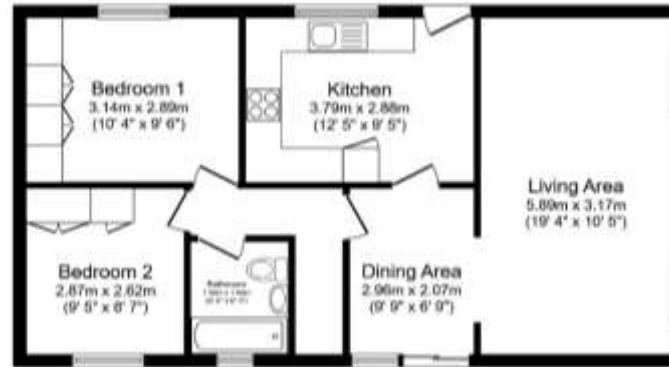
Residential license

House to sell?

Hassle-free Property Part-Exchange is available from Quickmove Properties, with no estate agent fees, no solicitor's fees and no market uncertainty.

Key Features

- Community Living
- Established Park
- Garden space
- Over 52
- Parking space
- Part Exchange Available
- Pre-owned park home
- Residential Development
- Two Bedrooms
- Village location



CONTACT US

01793 840917

advice@quickmoveproperties.co.uk

Quickmove
PROPERTIES

