

Saltash, Cornwall, PL12



Price as listed



This brand new, modern-furnished Omar Image park home (45'x20') is perfect for those looking for a detached, easy to maintain, bungalow-style property. The home has a spacious and modern kitchen with integrated appliances, dining area and a comfortable living room. The master bedroom has a dressing area and en suite shower room, there is a second double bedroom and a family bathroom. The home also has parking and a garden space.

This residential park is a modern rural development and the perfect place for rest and relaxation. The secluded 9.5 acre park has a gated entrance and provides a safe environment, free from the stresses of town and city living. Set in glorious Cornish countryside near Saltash, this development has everything you'll need right on the doorstep. The homes are located a 15 minute walk from the village of Landrake where you can find your nearest amenities including a post office and village shop.

Age restriction: Over 45s

Pet Friendly: Yes

Site fees: £250 per month

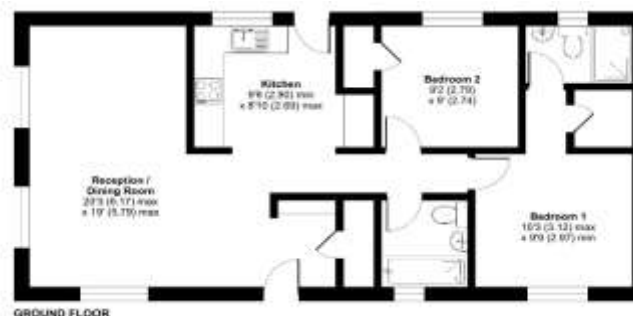
Residential license

House to sell?

Hassle-free Property Part-Exchange is available from Quickmove Properties, with no estate agent fees, no solicitor's fees and no market uncertainty.

Key Features

- Brand new home
- Community Living
- Countryside location
- Exceptionally High Specification
- Fully Furnished
- Modern design
- Over 45s
- Part Exchange Available
- Pet-Friendly
- Two Double Bedrooms



CONTACT US

01793 840917

advice@quickmoveproperties.co.uk

Quickmove
PROPERTIES

