

# Hereford, Herefordshire, HR4



Price as listed



This re-furbished park home (40'x20') is perfect for those looking for a detached, easy-to-maintain, bungalow-style property. The home has a kitchen, living room, two bedrooms, two bathrooms, conservatory and garden with a brick shed.

The development is located on the outskirts of Hereford, making the most of amenities nearby and the wonderful surrounding countryside. Nearby is the Breacon Beacons National Park, and the Wye Valley National Landscape, both are full of walking and hiking routes and stunning landscapes. The centre of Hereford is 2.5 miles from the park, where you can find all your essential amenities, high street shops, train station and hospital.

Age restriction: Over 55s

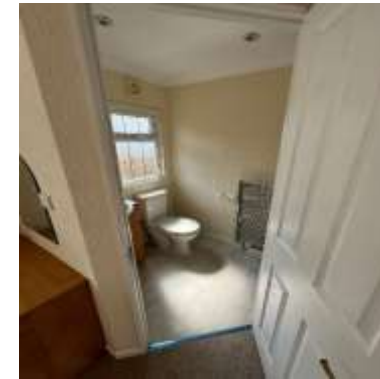
Pet friendly: Yes

Site fees (at time of listing): £210 per month

Residential license

### Key Features

- Bus stop at park entrance
- Close To Nearby Amenities
- Exceptionally High Specification
- Over 55's
- Pet-Friendly
- Refurbished Park Home
- Residential Development
- Two Bedrooms
- Part Exchange Available



### House to sell?

Hassle-free Property Part-Exchange is available from Quickmove Properties, with no estate agent fees, no solicitor's fees and no market uncertainty.

### CONTACT US

01793 840917

[advice@quickmoveproperties.co.uk](mailto:advice@quickmoveproperties.co.uk)

**Quickmove**  
PROPERTIES



The Property  
Ombudsman