

Chippenham, Wiltshire, SN14

Quickmove
PROPERTIES



Price as listed

 x 2

 x 2

This pre-owned, modern Omar Image (36'x20') luxury park home is perfect for those looking for a detached, easy-to-maintain, bungalow-style property. The landscaped exterior boasts a private garden space and driveway. Built in 2020, the home features a spacious kitchen and dining area, a comfortable living room with an electric fireplace, two bedrooms, an en suite and a family bathroom.

The park is an exclusive development of only 10 homes and is backing onto woodland. Located just off the M4 between Chippenham and Malmsbury, this development is within easy reach of many small towns and villages, including the famous Castle Combe. Less than half an hour from the park is Swindon and Bristol, where you can find high-street shopping, a range of popular restaurants and entertainment venues.

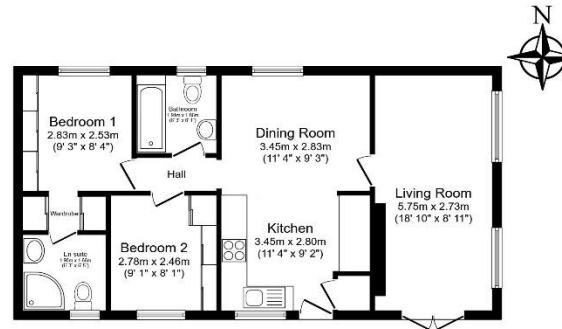
Age restriction: Over 50s
 Pet friendly: Yes
 Site fees: £182 per month
 Residential license

House to sell?

Hassle-free Property Part-Exchange is available from Quickmove Properties, with no estate agent fees, no solicitor's fees and no market uncertainty.

Key Features

- Countryside location
- Exceptionally High Specification
- Modern design
- Over 50s
- Part Exchange Available
- Pet-Friendly
- Pre-owned park home
- Residential Development
- Two Bedrooms



Total floor area 62.5 sq.m. (673 sq.ft.) approx

This floor plan is for illustrative purposes only. It is not drawn to scale. Any measurements, floor areas (including any total floor area), openings and orientation are approximate. No details are guaranteed, they cannot be relied upon for any purpose and they do not form part of any agreement. No liability is taken for any error, omission or misstatement. A party must rely upon its own inspection(s). Powered by www.foxsqagent.com



CONTACT US

01793 840917

advice@quickmoveproperties.co.uk

Quickmove
 PROPERTIES

