

# Worcester, Worcestershire, WR2

**Quickmove**  
PROPERTIES



Price as listed

 x 2

 x 2

This pre-owned Stately Rockingham (44'x20') park home is perfect for those looking for a detached, easy-to-maintain, bungalow-style property. The home has two double bedrooms (one with built-in wardrobes), a shower room, kitchen with pantry, utility room, study, a spacious living room, and a separate dining room. The exterior has a wrap-around patio, garden, and parking for one car.

The development is located near a few small villages including Callows End and Powick, which is a short drive from the city of Worcester. Worcester is a lovely small city on the River Severn, with a bustling town centre. The Malvern Hills are a short drive from the park with stunning scenery and walking routes.

Age restriction: Over 52

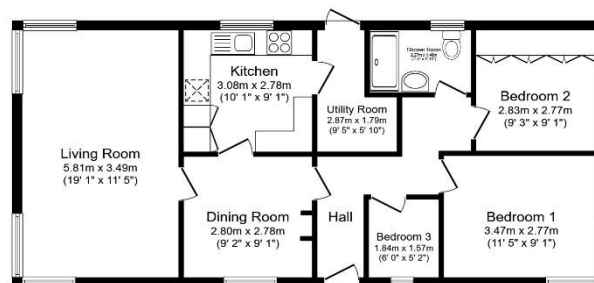
Pet friendly: Yes

Site fees (at time of listing): £190 every 4 weeks

Residential license

## Key Features

- Community living
- Garden space
- Over 52
- Parking space
- Part Exchange available
- Residential development
- Two bedrooms
- Village location



## House to sell?

Hassle-free Property Part-Exchange is available from Quickmove Properties, with no estate agent fees, no solicitor's fees and no market uncertainty.

## CONTACT US

01793 840917

[advice@quickmoveproperties.co.uk](mailto:advice@quickmoveproperties.co.uk)

**Quickmove**  
PROPERTIES

