

# Lowestoft, Suffolk, NR33



Price as listed



This brand-new, modern-furnished Omar Newmarket (40'x20') luxury park home is perfect for those looking for a detached, easy-to-maintain, bungalow-style property. The home has a spacious open plan kitchen and dining area. There is a comfortable living room, two double bedrooms, an en suite and a bathroom.

The development is located right on the edge of Lowestoft, just a few miles from the coast. Lowestoft is a popular coastal town, with train stations, high street shops and traditional seaside with beaches and piers. The location of the development provides a great base for exploring the east of England, with various nature reserve, gardens and walking routes to enjoy.

Age restriction: Over 45s

Pet friendly

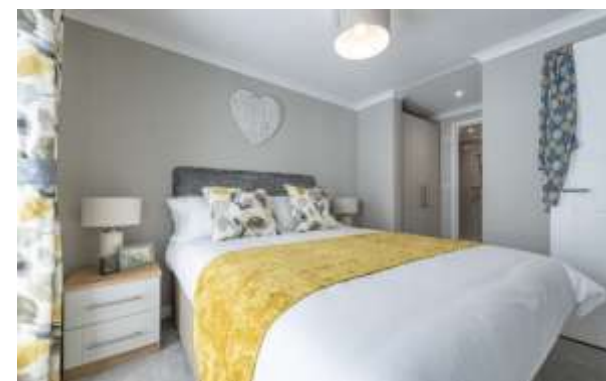
Site fees (at time of listing): £250 per month

Residential license

Stock images have been used

### Key Features

- Brand new home
- Coastal Location
- Community living
- Exceptionally high specification
- Modern design
- Over 45s
- Part Exchange available
- Pet friendly
- Town facilities nearby
- Two bedrooms



### House to sell?

Hassle-free Property Part-Exchange is available from Quickmove Properties, with no estate agent fees, no solicitor's fees and no market uncertainty.

### CONTACT US

01793 840917

[advice@quickmoveproperties.co.uk](mailto:advice@quickmoveproperties.co.uk)

