

Romford, Essex, RM3



Price as listed



x 1



x 1

This pre-owned park home is perfect for those looking for a detached, easy to maintain, bungalow-style property. The home has been well maintained and is ready to move into, there is an open plan kitchen, dining and living area, one double bedroom with built in wardrobes, and a bathroom. The home has a private garden space and off-road parking.

Located in Romford, this is a mature residential park comprising of over 132 homes set out in a variety of locations, giving the overall feel of a small village. The park has good connections with Harold Hill and Brentwood and is just a 5-minute drive from the M25. Hilldene Shopping Centre is just a mile away and it is approximately a 20-minute drive to Lakeside in Thurrock with its excellent shopping, restaurants and entertainment facilities.

Age restriction: Over 50s

Pet friendly

Site fees (at time of listing): £245.80 per month

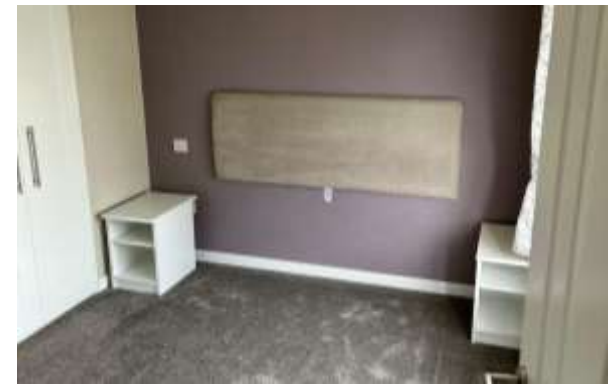
Residential license

House to sell?

Hassle-free Property Part-Exchange is available from Quickmove Properties, with no estate agent fees, no solicitor's fees and no market uncertainty.

Key Features

- Community living
- Established park
- Garden space
- Over 50s
- Part Exchange available
- Pre-owned park home
- Residential development
- Shops and amenities nearby



CONTACT US

01793 840917

advice@quickmoveproperties.co.uk

Quickmove
PROPERTIES

