

Frodsham, Cheshire, WA6



Price as listed



This pre-owned Wersley Hardy (36'x20') park home is perfect for those looking for a detached, easy-to-maintain, bungalow-style property. The home has a spacious kitchen with integrated appliances, dining room and living room with patio doors leading out to the garden. There are two double bedrooms and a bathroom. The home has two parking spaces, and a large, low maintenance turfed garden with shed with wonderful views of the surrounding countryside.

This residential development is situated on the edge of the picturesque Cheshire village of Alvanley. Located in rolling countryside, the small, established community of like-minded residents enjoys a gentler pace of life with both Chester and Frodsham just a short drive away. The park offers its residents direct access to a network of tranquil footpaths, the local nature reserve and charming village pubs.

Age restriction: Over 50s

Pet friendly: Cats only

Site fees (at time of listing): £185 per month

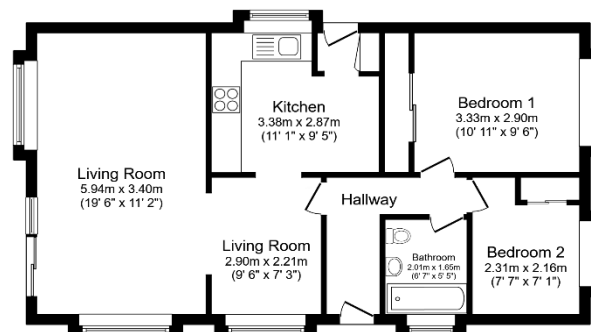
Residential license

House to sell?

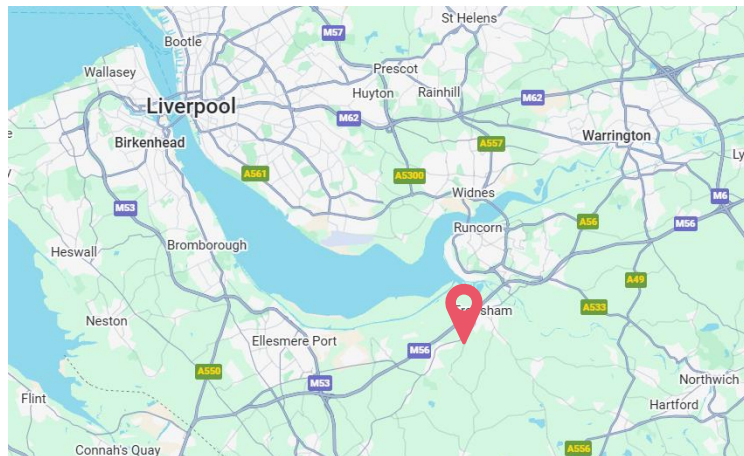
Hassle-free Property Part-Exchange is available from Quickmove Properties, with no estate agent fees, no solicitor's fees and no market uncertainty.

Key Features

- Cat friendly
- Community living
- Countryside views
- Established park
- Large garden
- Over 50s
- Part Exchange available
- Pre-owned park home
- Residential development
- Two bedrooms



Floor Plan
Floor area 67.5 sq.m. (727 sq.ft.)



CONTACT US

01793 840917

advice@quickmoveproperties.co.uk

Quickmove
PROPERTIES



The Property
Ombudsman