

# Poole, Dorset, BH16



Price as listed



This brand new, modern-furnished Prestige Sofia (40'x20') luxury park bungalow is perfect for those looking for a detached, easy to maintain, bungalow-style property. The home has an open plan kitchen and dining room, with integrated appliances and breakfast bar. There is a comfortable living room with large windows, two double bedrooms, en suite and bathroom.

The development atop Beacon Hill is just three miles west of Poole Town Centre and five miles from some of the best beaches that Britain has to offer. Excursions to the neighbouring towns of Bournemouth and Salisbury are also made possible by the convenient location of the park. A bus stop is located directly outside the park allows residents to hop on the Ferry to Sandbanks, close access to the Jurassic Coast and the main ferry terminal to Jersey.

Age restriction: Over 45s

Pet friendly: Yes

Site fees (at time of listing): £322.80 per month

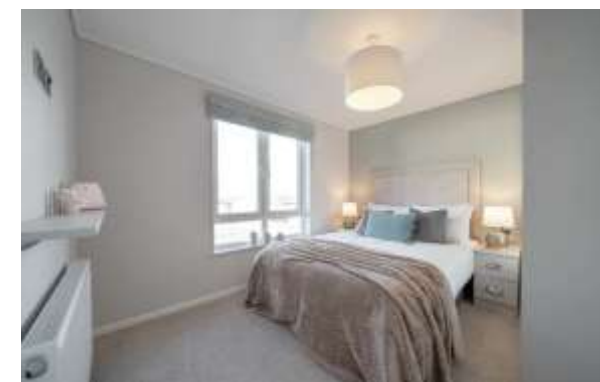
Residential license

### House to sell?

Hassle-free Property Part-Exchange is available from Quickmove Properties, with no estate agent fees, no solicitor's fees and no market uncertainty.

### Key Features

- 10-Year Goldshield Warranty
- Brand new home
- Fully Fitted Kitchen
- Fully Furnished
- Gated and secure community
- Off-road Parking
- Part Exchange Available
- Pet-Friendly
- Residential Development
- Stamp Duty Exempt



### CONTACT US

01793 840917

[advice@quickmoveproperties.co.uk](mailto:advice@quickmoveproperties.co.uk)

**Quickmove**  
PROPERTIES

