

Abingdon, Oxfordshire, OX13



Price as listed



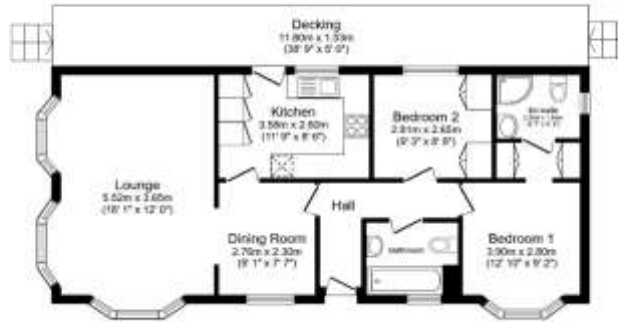
This pre-owned, vacant, modern Omar (40'x18') luxury park home is perfect for those looking for a detached, easy-to-maintain, bungalow-style property. The home has a modern kitchen with integrated appliances, dining area and comfortable living room. The master bedroom has an en suite and a dressing area, there is a second double bedroom and bathroom. The home has a garden space with astro-turf, shed, decking with countryside views and two parking spaces.

This charming residential park is set in beautiful rural surroundings, overlooking areas of outstanding beauty. The park is located to provide peace and tranquillity and yet the bustling University town of Oxford is just five miles away and the market town of Abingdon-on-Thames is only two miles away. Abingdon is an old market town situated on the west bank of the River Thames, 7 miles downstream of Oxford and has historical and archaeological connections.

Age restriction: Over 50s
 Site fees (at time of listing): £280 per month
 Residential license

Key Features

- Established park
- Fully furnished
- Garden space
- Gated and secure community
- Outstanding location
- Over 50s
- Part Exchange available
- Pre-owned park home
- Residential park
- Rural Location



CONTACT US

01793 840917

advice@quickmoveproperties.co.uk

